

Lone Star News

Official Publication of the Texas State Organization



Vol 65, No. 1

The Delta Kappa Gamma Society International ~ Key Women Educators

Fall 2011

Glancing back and looking forward

The closing event of the 82nd Texas State Convention was the Presidents and Founders Banquet. During this event, the gavel was passed from 2009-2011 Texas State President Dr. Vicki Davis to the incoming State President Joanne Davis.

As Vicki Davis summed up her biennium, she noted that we moved into a new decade and met new invigorating challenges. We learned to shut out our past except that which helps us weather our tomorrow. We acted in tune with the present; we expressed hope for the future.

The outgoing president reminded members that we met challenges with a myriad of responsibilities, but our focused dreams and sheer determination guided us so that today, thanks to each of us, we can echo Jodi Hill: "We are not where we have been. We are not where we are going...but we are on our way."

Joanne Davis looked to the future as she announced her theme: "Explore the Possibilities: Let Our Vision Light the Way." The vision of Delta Kappa Gamma is "Leading Women Educators Impacting Education Worldwide." As key women educators we must project our vision. We must use our energy to strengthen the fulfillment of our purposes. We must find new ways to impact education throughout the global society. The lighthouse and its light represent our vision. The most important part of the lighthouse is what goes forth: the beam of light. We must be the beam of light to guide the way to making our vision a reality.



Passing the gavel. Vicki Davis gives the gavel of authority to Joanne Davis the 39th President of the Texas State Organization of Delta Kappa Gamma



Cool Guys in McAllen being supportive during the Delta Kappa Gamma song.

The incoming president emphasized that a vision is very different from day dreaming. Fantasies will never manifest, however a vision that has been focused on will. It is like shining a light through the darkness to point the way, and that way is the path to our vision. As we enter this new biennium, may we be dedicated to exploring all the new possibilities that are within our grasp always letting the beam of our vision light the path to lead us forward into the future as we truly become leading women educators impacting education worldwide.

2011-2013

State Executive Committee

President

Joanne Davis
Beta Zeta (6)
joannedavis209@gmail.com

1st Vice President

Dr. Jo Murphy
Iota Iota (16)
jomurphy@suddenlink.net

2nd Vice President

Katherine Reid
Theta Sigma (10)
klreid2@comcast.net

Recording Secretary

(Mary) Pat Osborne
Zeta Tau (18)
maryosborne@sbcglobal.net

Corresponding Secretary

Sandra Smith Bull
Lambda Iota (7)
sandrasmithbull@yahoo.com

Parliamentarian

Marilyn Gregory
Epsilon Kappa (7)
teachkind2@aol.com

Immediate Past President

Dr. Vicki Tigert Davis
Beta Lambda (17)
vicki_davis@tamu-commerce.edu

Executive Secretary/
Treasurer

Betty Vines
Kappa Delta (10)
alphasttx@sbcglobal.net

Editor/Photographer

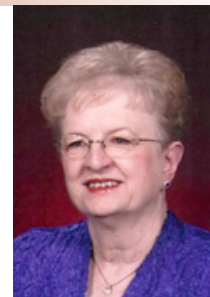
Carol McMillan
Delta Gamma (1)
news.lonestar@gmail.com

*There comes that
mysterious meeting
in life when someone
acknowledges who we
are and what we can
be, igniting the circuits
of our highest potential.*

Rusty Berkus

Developing the possibilities

Joanne Davis
2011-2013
Texas State President



What an exciting time this is for Texas State Organization! Let's **explore the possibilities** that are waiting to be developed in this future before us.

We have our own Alpha State Texas Educational Foundation (ASTEFL) I am not sure all members see the possibilities here, but there are many. First, there are three facets of operation within the foundation. Two of them are quite familiar to members—**Scholarships** and **Leadership Seminar**. ASTEFL will manage these funds in the future. These funds are healthy and will continue to operate as they have operated under Texas State Organization.

The third facet of ASTEFL will be the new **Projects** arm of operation. As this arm of the foundation is developing, members are encouraged to designate gifts to this segment of the foundation. Details of this facet can be found in the ASTEFL article on page 8. To further encourage the building of this fund, chapters who choose to redirect contributions from Scholarships and Leadership Seminar to Projects will receive extra points on the PACE application for this year. Donations to ASTEFL are tax deductible to individuals who itemize on their tax return.

My vision is that as this fund is built, chapters will be able to apply to ASTEFL for grants to help fund chapter projects. Go to the state Web site for the latest information or contact Jean Webb, ASTEFL President, at webbjeanh@sbcglobal.net for questions.

Are you aware that Texas State Organization is approved to offer CPE credits for chapter or area programs that meet the guidelines for TEA credit? Your chapter or area could develop a CPE Workshop offering CPE credits on a Saturday or schedule a special program for a chapter meeting. Non-members could be invited at a charge. I can't imagine a better introduction to the Society and professional activities that we offer than having a non-member attend a well-organized event where she can earn CPE credit at a reasonable charge. Contact Dr. Carolyn Underwood, Professional Affairs Chairman, at cylinderwood@sbcglobal.net for more information.

During this biennium Texas State Organization will undergo a complete revision of state bylaws. Many decisions will be made about committee structure and changes in operational procedures. The revision team and the state committee will be seeking your opinions on these issues. The completed document will be presented at the 2013 State Convention in Austin for approval of the general assembly. Contact any Texas State Organization officer, the chairman of the Constitution and Bylaws Committee Rhonda Posey at rrposey@gt.rr.com or the chairman of the Revision Committee Marilyn Gregory at teachkind2@aol.com to express your opinion or ask a question.

See what possibilities we have before us! We are ready to be guided by the beam leading us to the vision of leading women educators impacting education worldwide.

Betty's Buzz

Betty Vines
Executive Secretary/Treasurer



A new year begins

A new day! A new year! A new biennium! What other profession offers the opportunity for yearly new beginnings? How fortunate we are as educators! At Headquarters we are not only excited about new beginnings, but thankful for the actions taken at the convention. We look forward to welcoming an additional person in the office by January. Have you considered applying to serve as the State Treasurer?

This column usually focuses on reminders and tips for treasurers and other members interested in the finances of your chapter and the state. It is hoped that you benefit by being reminded or by learning something new.

A hot topic or one of the most asked questions currently involves the scholarship donations and recognitions. According to the International Constitution, all members pay a \$1 scholarship fee with dues. This is separate and does not count for the Scholarship "Honors" designation. For a chapter to be recognized as an "Honors" chapter in the convention program, each member must give an additional dollar and the money must arrive at the state office no later than April 1. A new contribution form is available on the state website.

Thanks to the treasurers who submitted the yearly report. It became a part of the state report sent to International on September 1. Dues collection should be well underway. Treasurers should get others to help with the dues collection. Additional forms related to dues can be found on the International website. Good luck and we will look forward to getting all of the dues by November 10!

Did you know

- The Texas Bylaws are on our website.
- The Texas Bylaws are being revised to align with the new 2010 International Constitution

Now is the time to be part of this process. The Bylaws Revision Committee is asking members and chapters to contribute to these revisions by November 1. All suggestions should include your name and email address, Article # you are addressing, and a complete statement of the changes. Contact any Texas State Organization officer, the Chairman of the Constitution and Bylaws Committee, Rhonda Posey at rrposey@gt.rr.com or the Chairman of the Revision Committee, Marilyn Gregory at teachkind2@aol.com to express your opinion or ask a question.

At-A-Glance

Deadlines

Sept 1	State Treasurer Form 16
Oct 1	Mini Grant application
Nov 1	Members dropped for non-payment of dues & fees
Nov 1	Early Bird Yearbook Award
Nov 1	LSN Articles
Nov 10	Chapter Treasurer Form 18
Nov 15	IRS Form 990

Committees

Sept 17-18	PSP advisory
Sept 19-20	ASTEF
Sept 30	Exec. Committee
Oct 1	Exec. Committee
Oct 1-2	LDCP
Oct 15-16	AC training
Nov 5-6	Program of Work & Membership

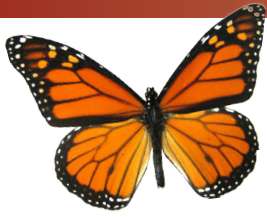
Highlights

ASTEF	16
Denver	5, 13
Dues	12
Gold Piece	8
Member News	7
Newsletters	6
President	2
Treasure boxes	9
Yearbooks	13

Alpha State Headquarters
P.O.Box 797787
Dallas, TX 75379-7787
Dallas telephone: 972.930.9945
Toll Free: 800.305.3525
FAX: 972.447.0471
www.alphastatetexas.org

International Headquarters
P. O. Box 1589
(416 West 12th Street)
Austin, Texas 78767-1589
Austin telephone: 512.478.5748
Toll free: 888.762.4685
www.dkg.org

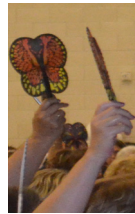
MEMBERS: Send address changes to International Headquarters: call, write, go on-line or e-mail LindaD@deltakappagamma.org.



Butterflies beautify McAllen

Monarch butterflies are a familiar sight to residents of McAllen because the city is located in the butterflies' migration path to Mexico.

Convention goers saw none of the beautiful insects in the wild; they had migrated north for the summer. They did enjoy the beauty and the spirit of butterflies on display throughout the convention.



Voting by executive committee during the business session



Butterfly clipboards. Dianna Stouffer, Theta Alpha (9-Dallas)



CPE Credit-Linda Anderson, Zeta Gamma (1-Tyler), Dr. Marian Clinton, Eta Epsilon (10-Collyville) and Kathryn Wright, Xi (7-Austin).



Presentation of presidents-Mary Claire Welch, Eta Zeta (9-Dallas); Jo Murphy, Iota Iota (16 Oak Point); Cindy Neander, Kappa Theta (16-Lewisville).

Area 18 (Houston) before presentation of presidents. Chris Morrison (AC), Lambda Alpha; Cheryl Moore, Lambda Delta; Teresa Toliver, Kappa Kappa; Judy Hoya, Iota Alpha.

Middle row: Sandy Schneider, Zeta Tau; Nancy Frankel, Mu Phi

Front row: Jeanette Pratt, Lambda Tau; Risa McCann, Mu Pi; Huntyce Moore, Lambda Gamma; Ruth Kropp, Delta Kappa.

Right: Birthday Luncheon Jerry Bell, Delta Upsilon (3-Houston); Lois Kildahl, Rho (5-McAllen).

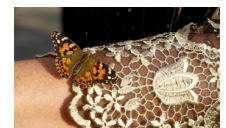


Chapter presidents- Deborah Payne, Theta Epsilon (12-Levelland) and Diana Brown, Kappa Theta (16-Double Oak).



Left: Birthday Luncheon- Melody Drinkard, Delta Iota (14-Gardendale).

Below: Butterfly release after state personnel dinner.



Texans entertain at SW Regional



First chair ladle. Frances Ziegenhals Alpha Iota (4-Wharton).

The Southwest Regional Conference might have been held in Colorado, but the music and movement had a distinctively Texas touch.

Kay Bollom, SW music representative, chose her traditional choir selections for audience appeal and ease of learning since all music had to be learned on site.



Soloist. Diane Moose, Zeta Omega (3-Deer Park).

To make sure the audience didn't become complacent in their listening during the Birthday Luncheon, the choir changed tempos and presented "Mambo Italiano." Incoming State Music Committee Chairman Deborah Payne sang a solo on "Mambo," and Janye Brainard did an "Italiano" dance with her scarf.

The same playful diversification of rhythm was used during the



Presidents Banquet when the choir presented "Concerto for Knives, Forks, Spoons, and One Soup Ladle."



Top Left: Flute Trio. Berneil Drake, Arizona, Jensi Saunders, international president, Tennessee, Kay Bollom, Texas

Middle: Energizers. Carla Meuth, Lambda Sigma (4-Richmond); Joan Eubanks, Lambda Sigma (4-Missouri City); Mary Ann Dolezal, Lambda Sigma (4-Sugar Land); Mary Crochet, Lambda Sigma (4-Missouri City).



Bottom: Dance Evolution: the Sprinkler. Betty Hill, Alpha Iota (4-East Bernard) and Debra Mahlmann, Alpha Iota (4-Richmond).



Kay Bollom, SW Music Representative, Alpha Iota (4-Wharton).

During this production, the spotlight was on Frances Ziegenhals, first chair soup ladle. She was accompanied with knives, forks and spoons played by Betty Hill, Debra Mahlmann, Mary Ann Dolezal, Carla Meuth, Joan Eubanks and Mary Crochet.

The audience didn't always have to be moving or singing to be involved in the entertainment. When Kay and the kitchen utensil group collaborated on "Evolution of Dance," members roared with laughter as the talented group demonstrated popular dances that have emerged throughout the years.

Playing the preludes and postludes for two of the general sessions were Cynthia DeVies and Sharon Kraus. Diane Moose sang "Wind Beneath My Wings" during the Birthday Luncheon. Kay Bollom and Natalie Eustace sang a duet for the Saturday prayer service, and a group of Texas State Music Committee Chairmen, Cathy Criner, Natalie Eustice, Carolyn Rigsby, and Kay Bollom, sang the grace for the All States Breakfast.

Even classical music was included in the entertainment. At the All States Breakfast, a flute trio with Kay Bollom, Jensi Saunders and Berneil Drake played Beethoven's "Rage Over a Lost Penny" and Pekas' "Butterflies."

Diversity flourished among the Texas entertainers.

Mini Grants

Barbara Derrick, Scholarship Chairman

Is there a workshop, conference, training, or some sort of professional development you are dying to attend, but due to budget restraints your school district is unable to send you? Then why not apply for a mini-grant!

The purpose of the mini-grant program of the Texas State Organization Scholarships Program is to support non-traditional types of professional development activities for Society members.

The maximum amount available per member is \$500. Applicants must have been a member of the Texas State Organization for a minimum of five years before June 1 of the application year.

The application is available from Headquarters or on the Alpha State website www.alphastatetexas.org Applicants are encouraged to return all documentation in one envelope to State Scholarship Chairman Barbara Derrick, 4214 Bolton Ave, Santa Fe 77510. Mini-grants are given twice a year with an October 1 and March 1 deadline.

Don't delay; apply today!

Attention Newsletter Editors

Karolyn Caldwell, Communications Chairman



Contacts for Communications

Please send a **hard copy** of each edition of your chapter's newsletter to:

- Joanne Davis Texas State President
- Carol McMillan Editor/Photographer *LSN*
- Karolyn Caldwell Communications Chairman

Contact each AC for her preferred method of receiving the newsletter.

For more information about newsletters, visit the Communication Committee on the Texas State Website www.alphastatetexas.org or contact the Communications Chairman at kbellrc@hotmail.com

From the Webmaster

Diane Moose



Useful Resources!

Many of us are accustomed to visiting www.alphastatetexas.org to find forms and deadlines. Did you know that there are also tons of other useful resources available for your use? Let us start by looking at the "Resources" page. There, you will find not only the DKG governing documents but also reference materials such as the TSO Official Manual, Society graphics, PowerPoint slide shows and videos.

One new section that has been added is entitled "Area Info." There you will find a map of Texas showing the location of our eighteen areas. Also there, you will find links to pages for each of the areas. In days to come, information specific to each area will be added to the pages.

If you are interested in some useful information to help with computer skills, the Technology Committee page is the place to visit. "Technology Tips and Treats" and "Technology Tip Sheets" are innovative publications being developed by the 2011-2013 Technology Committee. They address issues useful to both the novice computer user and the more advanced user.

Visitors to the 2012 Convention Committee page will be treated to the "Las Colinas Newsettes." These informative publications will surely make you want to attend the 83rd TSO Convention in Las Colinas – Irving, Texas. They are both colorful and interesting.

To keep yourself and your chapter up to date on the latest Society news, don't forget to visit our home page often. And don't forget, we exist to be of service to you the member; so feel free to let us hear from you if you have questions or useful suggestions.

Member News



Patricia Williams, Upsilon (2-Huntsville) was elected as president-elect for Phi Delta Kappa International beginning July 1, 2011.

Elizabeth Hensley, Eta Delta (3-Houston) has been appointed to the Texas Media Awards Committee of the Texas Library Association. She also received a \$2000 Target Early Literacy Grant for her school's Calvert Cub Reading Scholars.

Lambda Upsilon President, **Cheryl Kelly** (9-Rockwall) was a recipient of The Innovative Teaching Grant titled "Heroes Among Us--- Making the World a Better Place". The Amount for this grant was \$2,350.00.

Carla Meuth, Joan Eubanks, Mary Ann Dolezal, and Mary Crochet, Lambda Sigma (4) have been invited to energize the 2012 convention in New York.

The 2010 Northwest Houston Leader of the Year was **Janice Gabriel**, Zeta Mu (3-Houston).

When **Aimee Dowgar** was initiated into the Alpha Kappa Chapter (12-Lubbock) of Delta Kappa Gamma in April 2011, she was presented her great-grandmother, Mary Ruth Deering's key pin by her mother, **Laura Skeen**, president of the Alpha Kappa Chapter.



Aimee Dowgar and Laura Skeen, Alpha Kappa 12-Lubbock)

Alpha State Remembers

We mourn the passing and celebrate the lives of those cherished members of the Society whose deaths have been reported to Texas Necrology Chairman Carolyn Rigsby between April 2, 2011 and August 15, 2011. They are reported by their chapter and residence at time of death.

- Madge Simmons, Alpha (7-Austin)
- Grace M. Moody, Beta (6-San Antonio)
- Felice Nussen Blatt, Omicron (3-Houston)
- Selma Marie Burandt, Rho (5-Pharr)
- Zelda Reed, Tau (8-Groesbeck)
- Treba Skipworth, Alpha Lambda (5-Kingsville)
- Lucila Trevino, Alpha Nu (6-Laredo)
- Gwen Yocom, Alpha Pi (17-Nashville, AR)
- Elizabeth B. Owen, Alpha Sigma (12-Lubbock)
- Evelyn Hudman Smith, Alpha Sigma (12-Lubbock)
- Bernice Ruth Wagner, Alpha Phi (4-Nordheim)
- Mildred E. Elkins, Beta Omicron (3-Houston)
- Sarah Baugh, Delta Psi (5-Corpus Christi)
- Sudie Lurene Kornegay, Delta Psi (5-Corpus Christi)
- Marlene Dojahn, Epsilon Beta (6-San Antonio)
- Zada Gladden Bruce, Epsilon Lambda (10-Fort Worth)
- Martha Coats Danford, Epsilon Tau (3-Conroe)
- Doris Livesay Mills, Epsilon Tau (3-Texas City)
- Edith Cook Williams, Epsilon Tau (3-Tomball)
- Louise Lane Glossop, Epsilon Upsilon (5-Mission)
- Esther Baum Mack, Epsilon Phi (5-Weslaco)
- Lois V. Anderson, Zeta Gamma (1-Tyler)
- Charlotte Ellen Brantley, Zeta Delta (11-Canyon)
- Ruth Talbert, Zeta Psi (13-Abilene)
- Janie Obregon, Theta Beta (6-San Antonio)
- Ann Shaw Price, Theta Beta (6-San Antonio)
- Evelyn Louise Horton, Lambda Pi (10-Granbury)
- Alice Iberia (Bea) Strowd, Mu Lambda (16-Graham)

Bequest of Delta Kappa Gamma Pins

In the event of my death, I respectfully request my family to donate my Delta Kappa Gamma pins to my chapter:

_____, or to the Texas State Organization.

Signed _____

Date: _____

If this is your desire, please cut out and place with your pins.



Growing with Golden Gift

Marilyn Gregory

As teachers and administrators, we strive for the best for our students. We provide materials, develop excellent lessons and challenge and encourage our students to reach their full potential while seldom seeking new stimulating personal and professional growth for ourselves.

Bryan Tracy said, "Move out of your comfort zone. You can only grow if you are willing to feel uncomfortable when you try something." You moved out of your comfort zone and grew when you joined Delta Kappa Gamma. In your chapter, you learned from your members and served in many leadership positions.

As you continued to work on the area, state and international levels you learned more about the society and its numerous ways to help and encourage members. There are so many opportunities in Delta Kappa Gamma for you to grow as a member and Golden Gift Leadership/Management Seminar is one of these.

In 2001, I was honored to be chosen to participate in the Golden Gift Leadership/Management Seminar. I, along with twenty nine other DKG sisters from all over the world, arrived at the University of Texas in Austin for two weeks of intense personal growth and leadership training. Little did we know this Delta Kappa Gamma seminar would be a life-changing experience.

Every day outstanding presenters involved us in excellent exciting sessions and group activities challenged us to think

in different ways to solve situational problems. During the seminar, we met members of the Austin chapters, who acted as our gracious hostesses, provided us with special goodies and transported us to several events at International Headquarters.

As we participated with our new DKG friends, we learned different personality types and how to interact and work with each other. We also learned about ourselves, acknowledged our strengths and worked on our weaknesses. This resulted in setting new goals for ourselves. During these two weeks, we bonded as sisters and have continued to stay in contact with each other for the past ten years. We support and encourage each other as we continue being life-long learners!

If you are ready to grow, challenge yourself and become friends with DKG members from all over the world, then I strongly encourage you to apply for the Golden Gift Leadership/Management Seminar. Applications are available by going to the DKG website, www.dkg.org, under forms and must be submitted by the December 1, 2011 deadline.

Marilyn Gregory, state parliamentarian, attended Golden Gift in 2001. She is currently on the GG committee and has worked for years as an Austin hostess and Austin hostess chairman for the seminar event.

Educational Impact

Children are a Texas Treasure



Bianna Perez, 6, of Edinburg, is engaged with Dr. Gloria Crum in exploring one of the Texas treasure boxes at Driscoll Children's Medical Plaza in McAllen.

Bianna Perez is a 6-year-old who was scheduled to go through extensive procedures to determine what was wrong with her liver. Her life was being turned upside down in a strange place with strange sounds, smells, food and people.

A friendly smile from Gloria Crum and a Texas treasure box filled with toys and activities created a welcome diversion to her day. As she opened the box, the first thing she found was a box of crayons. She exclaimed that school was starting tomorrow, and she didn't have any crayons. The event was a small connection

to normalcy, but an important one.

We are going to be providing that connection over 1100 times to chronically ill children in Area V because that is how many Texas treasure boxes filled with age and gender-appropriate learning activities were collected at the state convention in McAllen for the state's 2011 Unifying Project.

Reagan Florence, the Director of Rio Grande Valley Development, shared that they would treat over 300 children that day. While Gloria was there four ambulances drove up to the front entrance and there were children on stretchers in the entrance way, yet everyone was calm.

Long-term patients began receiving Texas Treasure Boxes immediately after the state meeting. Area V chapters delivered shares of the goods to hospitals in their respective communities.



Cynthia Perez first chose a purse from her treasure box and then a book. She later had to lie still for four hours for three procedures that included a catheter, X-Rays and a scan. The Texas treasure box helped occupy her during that time.



Gloria Crum, convention chairman, watching Texas treasure boxes continue to pile up.

This project will not end with this summer because Rho Chapter has decided to adopt the Edinburg Children's Hospital and continue to create Texas treasure boxes as needed for that hospital. In addition, Epsilon Upsilon chapter will also continue to communicate with the Mission Regional Hospital and the McAllen Driscoll Childrens Clinic.

Look for an announcement of the 2012 Las Colinas Unifying Project (UP) on the state website to get a headstart working on the project with your chapter.



Kelly Broadus
Personnel
Chairman

State treasurer

Applications are now being taken for the newly approved position of State Treasurer. As TSO continues to light the way by finding new ways to impact education, the position of State Treasurer takes on a more comprehensive scope.

Qualifications, application, and general guidelines for the position are posted on the state website, www.alphastatetexas.org

The State Treasurer must be able to work out of State Headquarters in Dallas. Applications must be post-marked or submitted electronically no later than October 15, 2011.

Send applications to Kelly Broadus, TSO Personnel Chairman, 2104 Bay Club Drive, Arlington, TX, 76013 or email to kbroadus@sbcglobal.net Please consider applying yourself or encouraging other qualified members to apply.

Chapters earn PACE

Eighty-seven chapters earned one of the three categories of the President's Award for Chapter Excellence. The categories of awards were gold, silver and red. Listed below are the chapters winning the PACE Gold.

- Area 1:** Delta Gamma, Deborah Evans
- Area 3:** Beta Eta, Annette Taylor; Theta Zeta, Carolyn Rigsby; Gamma Nu, Margaret Ehlig
- Area 4:** Alpha Iota, Debra Mahlmann; Epsilon Omega, Kay Danziger
- Area 5:** Epsilon Upsilon, Lee Bourg
- Area 6:** Beta Zeta, Tammy Vitek; Beta Tau, Dorothy Bankhead
- Area 7:** Alpha Chi, Carol Young; Epsilon Kappa, Kim Thonhoff; Alpha, Joan Hester; Kappa Lambda, Jill Foltz; Nu, Dr. Evelyn Barrett
- Area 8:** Zeta, Corrie Login
- Area 9:** Eta Zeta, Joanne Szalay; Gamma Beta, Linda Puster; Theta Alpha, Baudelia Luna
- Area 10:** Lambda Pi, Suzan Watson; Theta Chi, Connie Rensink; Iota Pi, Cindy Drumm
- Area 12:** Alpha Sigma, Marlene Wellman; Theta Epsilon, Deborah Payne;
- Area 13:** Lambda Xi, Sharon Daugherty
- Area 14:** Zeta Xi, Lois Templeton
- Area 16:** Gamma Epsilon, Carol Lynn Donovan; Kappa Theta, Diana Brown
- Area 18:** Zeta Tau, Sandra Schneider; Mu Pi, Risa McCann; Delta Kappa, Ruth Kropp; Lambda Delta, Cheryl Moore



PACE Gold winners for 2010-2011

Dues Increase Approved

Sandi Causey, Finance Chairman

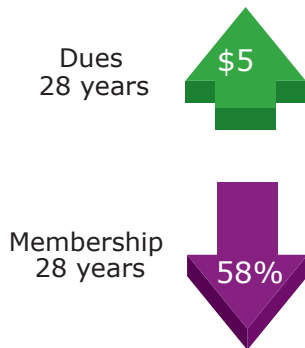


Texas State Organization dues for active members were increased from \$12 to \$20 at the state convention in McAllen this summer. Dues for reserve members were not increased. After budget cuts of \$32,000, the 2009-2011 budget was balanced on the reserves of the available fund. At that time, the finance committee reported that without a marked increase in membership a dues increase would be needed to balance the 2011-2013 budget.

Before arriving at the amount of the dues increase, the finance committee trimmed state committee budgets significantly as well as printing, postage, computer support and phone line items. Reimbursements of meal expenses for state personnel were also eliminated from the budget. In looking to the future of TSO, the committee included funds in the budget to pay the registration fee for chapter presidents to attend leadership training both years of their biennium. Currently it is paid for only one year.

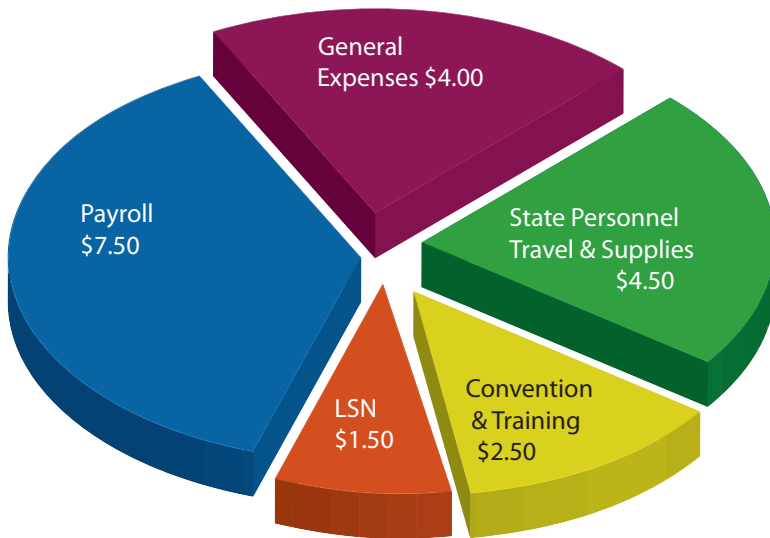
For the first time the budget includes an “Operating Income” line item. This amount will come into the Available Fund from the Scholarship, Leadership and Eula Lee Carter Funds as reimbursement for staff time and other costs related to the administration of these funds. This, along with the significant cuts and some Available Fund savings, allowed for a balanced budget with the least amount of increase in dues. The intent of the committee is that no further dues increase would be necessary for at least two bienniums if membership stabilizes.

Until 2011 McAllen Convention



In the past 28 years, Texas State Organization dues have only risen \$5 while membership in the organization has dropped 58%. Past budgets have drawn upon savings to balance the budget, a practice that cannot continue.

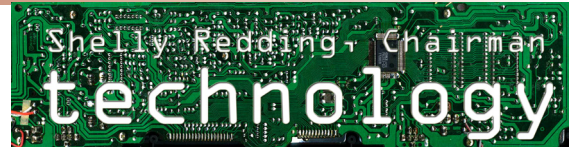
Texas State Organization Dues \$20



No one wants a dues increase but the cost of doing business requires it at this point. The state finance committee is committed to using Texas funds prudently and making decisions that are in the best interest of all members of Texas State Organization.

Programs, Programs, Programs Click, Click, Click

Natalie Eustace, Program of Works Chairman



Listen! Computer keys click as chapters begin unleashing creativity and imagination in their program planning. Members already think “Annie” as they refer to the Alpha State Website, clicking on “hints for writing a successful Annie application.”

In viewing the 2011 award winning chapters and program titles, another easy click, new program ideas abound. Chapter members click on the DKG International Website for detailed information to assist planning one meeting which informs members of the Schools for Africa International Project.

As the new school year begins, chapters focus on supporting Early-Career Educators, thinking of ways they can mentor new teachers, offering encouragement while lessening the feeling of isolation. Planning also includes considerations for member’s personal and professional pride while increasing their global awareness.

Discover the ease in navigating the web. Find answers to your program questions just a click away. Check out the easier-than-ever, user-friendly Annie application form. Through numerous emails, the members of your state Program Committee, listed on the web, already eagerly anticipate your spring Annie applications.

Let’s make this the year that every chapter in Alpha State presents an Annie application by the April 1 deadline.

Cloud Computing

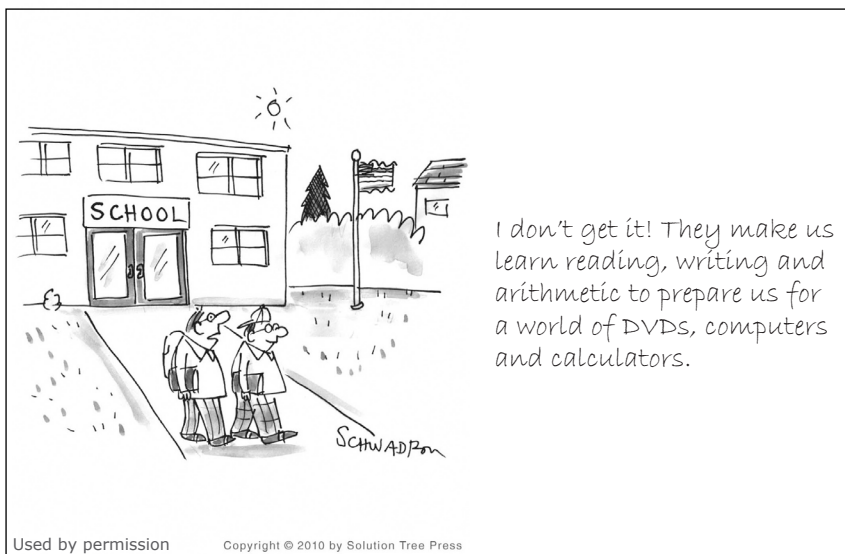
Are you “Cloud Computing”? It is actually one of the most used “buzz” words in technology in 2011. But, it is not a new concept. This term was first introduced in 2000 when a new company launched called the New Internet Computer (NIC). Their concept was very simple.

All computer users would have a very low-cost computer with just a processor, keyboard and a monitor. There would be no hard drive or CD/DVD player. The computer would be hooked to the internet and then would link to a supercomputer that would have all of the programs that one needed to use and hold all the files that an individual or company would use.

Unfortunately, in 2000, this idea was before its time. We are now seeing technology companies coming together to provide this service 10 years after NIC tried to do it. Companies such as Google, Apple and Amazon are diligently working to insure that “cloud computing” is the next big thing in technology.

With the ability to “cloud compute,” you will no longer need to worry that you have enough room on your computer to save your files or pictures or that you have the right software to create or view something. You will be able to reach to your personal computing cloud from ANY computer that has internet capabilities.

Currently, cloud computing is offered by Amazon for 5GB of space at no charge and up to 1000 GB of space for \$1000 per year. Check it out!



Name these buildings

A This landmark stands 555' 5-1/8" tall. The walls range in thickness from 15' at the base to 18" at the upper shaft. They are composed primarily of white marble blocks.

B This domed building is made from "sunset red" granite and was paid for with land instead of money. Adorning the top is the Goddess of Liberty.

C This facility was designed as two boxes, stacked and rotated. The majority of the building is surrounded in glass for natural light and curtained with a copper façade for both beauty and energy conservation.

A Washington Monument
 B Texas State Capitol
 C Las Colinas Convention Center

First timers attend convention

Lou McMillan, Delta Omicron
 Betty Duke-Ruhd, Mu Mu
 Donna Ahrens, Delta Upsilon
 Kathy Gyllenband, Mu Pi
 Susan Lampson, Eta Mu
 Patricia Williams, Upsilon
 Maria Swan, Epsilon Rho
 Adela Pirzadeh, Gamma Nu
 Noemi White, Omicron
 Teresa Burleson, Epsilon Upsilon
 Vanessa Suarez, Epsilon Upsilon
 Marlene Maldonado, Gamma Psi
 Adela Ramirez, Kappa Tau
 Julia Williams, Lambda Eta
 Lois Hall, Lambda Eta
 Linda Correa-Garcia, Lambda Eta
 Maria Ortega, Lambda Eta
 Rita Galloway, Lambda Eta
 Sandy Aguilar, Lambda Eta
 Virginia Vineyard, Lambda Eta
 Janice Johner, Mu Zeta
 Frances Hollenbeck, Rho
 Lucy Alvarado, Rho
 Margaret Vargo, Iota Phi
 Genia Klein, Xi
 Helen Usener, Beta Zeta
 Cynthia Frausto, Kappa Omega
 Kathy Teich, Mu Delta
 Marisa Tobias, Theta Upsilon
 Susan Moore, Theta Upsilon
 Regina Torrez, Zeta Beta

Sylvia Ekdahl, Beta Chi
 Debbie Crutcher, Beta Rho
 Dawn Caddell, Gamma Epsilon
 Dori Taylor, Lamba Rho
 Mary Alvarado, Mu Gamma
 Patricia Baldwin, Mu Kappa
 Noemy Renee Garcia, Alpha Lambda
 Cindy Petch, Epsilon Phi
 Ruth Riggins, Epsilon Phi
 Alma Ortega, Epsilon Upsilon
 Ann Marie Priolo, Epsilon Upsilon
 Anna Garza, Epsilon Upsilon
 Cynthia Liljedahl, Epsilon Upsilon
 Cynthia Prochazka, Epsilon Upsilon
 Diana Fuentes, Epsilon Upsilon
 Elida Austin, Epsilon Upsilon
 Elena De Los Santos Mycue, Epsilon Upsilon
 Jenny Hudsonpiller, Epsilon Upsilon
 Kristin Your, Epsilon Upsilon
 Raquel Lucio, Epsilon Upsilon

A version of the area map with area information is available on the state website.

YEARBOOKS

Carolyn Otto, Chairman

Chapters are encouraged to present yearbooks to their chapter members in electronic format. Chapters may submit their yearbook in a PDF file for evaluation to the yearbook chairman at carolyn1@gmail.com instead of mailing a hardcopy. The Yearbook Guidelines sheet must be included. Postmark deadlines still apply for awards.

The abbreviated version of a yearbook may be used again this year. This includes referencing the online locations of information for international and state personnel and events. Hard copies must be mailed to:

- Yearbook chairman (if not using PDF option)
- Alpha State Headquarters
- Area Coordinator
- Coordinating Council Chairman (if applicable)

Guidelines are on the state website.



Evelyn Barron, Catherine Davis, and Barbara Baethe on stage for opening night of the 2011 SW Regional Conference.

Texans visit Denver

The City of Denver, Colorado welcomed Southwest members with beautiful vistas, cultural diversity, and friendly hostesses.

Dr. Barbara Baethe, SW Regional director, promised a memorable time in Denver, and attendees weren't disappointed.

The outstanding speakers, new personnel training and informative workshops gave a reason for members from throughout the Southwest to get together and enjoy fun, fellowship and a little shopping too.



End of Hundred for Headquarters Campaign. Jeanie Styles, Epsilon Gamma (17-Mineola); Jean Robinson, Mu Tau (9-Mabank); Cheryl Crawford, Kappa Theta (16-Lewisville); Jean Webb, Iota Pi (10-Ft. Worth) and Darlene Bealmear, Lambda Upsilon (9-Rockwall), display the \$200,000 check representing payment to the Scholarship Fund for money borrowed to construct the headquarters building.

A Real Bonanza!

Cheryl Crawford, Headquarters Committee Chairman

Headquarters Committee thanks everyone who has participated in the Hundreds for Headquarters Campaign, made donations to the Headquarters Fund, and supported the raffles at Alpha State Conventions. Your efforts made it possible for us to present President Vicki Davis a check at this year's convention in McAllen for a \$200,000 payment toward the loan which was used to acquire the Headquarters office space in Dallas. The remainder of the loan will be paid as a line item in the available fund budget.

In addition, the Gift Bonanza at this year's convention brought \$11,524.70 for ASTEF. Special thanks to Area Coordinators, chapters, and the membership for providing the fantastic gift packages and for buying raffle tickets! Congratulations to all!

The Headquarters Committee would like to encourage committees, chapters, and individual members to visit TSO Headquarters. On the Texas State Organization home page you can find the State Headquarters link which will lead you to a PowerPoint Slide Show about Headquarters, the Headquarters Brochure, a Description of Headquarters Memorabilia, the Building Use Policy, Building Use Request form, and the Annual Report which has the final information on the Hundreds for Headquarters Campaign.

Leadership Development for Chapter Presidents

Shirl Hawes, LDCP Chairman

The LDCP committee will meet in October to begin planning the workshop for the incoming 2012-2014 chapter presidents. We need your help.

Chapter presidents: During the first year of your biennium, you have given your time and talents to ensure a successful chapter. Your recommendations are vital for planning an effective training session. Think back to your own training. What information was the most useful for nurturing a confident leader? What do you wish you had known before conducting that very first chapter meeting? What additional information will your successor require to lead your chapter in the next biennium?

Chapter members: What do you do to support and encourage your chapter president? What are the thoughtful things your chapter does to make her feel special? How does your chapter honor her for all her hard work as president? When you graciously accept your next chapter leadership position, what information will you need to lead confidently?

If you have any comments or suggestions, please share them with the LDCP committee by emailing shirlhawes@gmail.com. We look forward to your ideas for conducting an efficient, effective, and motivating presidents' training at the convention in Las Colinas.

Women honored for Society achievements



Nelle Genry



Wynona Lipsett

Nelle Gentry, Alpha Gamma (10-Cleburne) and **Wynona Lipsett**, Tau (8-Mexia) received the 2011 Texas State Organization's Achievement Award.

These women have made significant contributions to their chapters while being active in offices and committees. They continued this leadership on the state level by working on and chairing committees, serving as area coordinators, being convention chairmen and participating in the Alpha State Leadership Seminar.

Nelle's expertise is mathematics. She has been teaching equations, functions, angles and ratios for 37 years. Her students range from middle school to college age.

Wynona's talent is music. She taught for 24 years and extended her craft to civic choruses, community theater, and local churches. She served as international president of Mu Phi Epsilon Professional Music Fraternity.

Alpha State Texas Educational Foundation

Ruth Hull, ASTEF Vice President Events/Marketing



One year after a committee was appointed to explore the feasibility of establishing a nonprofit foundation for Texas, TSO members approved ASTEF, the Alpha State Texas Educational Foundation.

Members of the original committee are ASTEF Founding Directors and make up the 2011-2013 Executive Committee. They are Jean Webb, President; Lee Bourg, VP Programs; Ruth Hull, VP Events/Marketing; Dr. Vicki Davis, VP Advancement; Sandi Causey, VP Finance/Administration; Evelyn Barron, Secretary; and Betty Vines, Director ex-officio.

Additional Directors were elected at the initial meeting of ASTEF during the recent convention in McAllen. Directors elected to serve for the next six years are Carolyn Adkins, Alpha Upsilon (17-Daingerfield); Virginia Bowers, Epsilon Delta, (11-Muleshoe); Carolyn Grantham, Mu Kappa (15-El Paso); Andi Kirby, Alpha Pi (17-Texarkana); Carolyn Mashburn, Mu Pi (18-Kingwood); Shirley Owens, Beta Tau (6-Round Rock); and Jean Robinson, Mu Tau (9-Mabank). TSO President Joanne Davis, Scholarship Chair Barbara Derrick, Epsilon Sigma (3-Santa Fe), and Leadership Chair Gloria Crum, Epsilon Upsilon (5-McAllen) will serve as ASTEF Directors ex-officio for 2011-2013.

The new nonprofit educational foundation accepts and distributes money for Scholarships, Leadership, and Projects. Money is currently available for scholarships and leadership grants, but money is needed to help support projects initiated by members. Contributions to ASTEF are tax deductible. There are two classifications of donors: Founding Donor for contributions of \$50.00 or more prior to April 1, 2012 and Friend Donor for contributions up to \$50.00. The Texas Contribution Form is found on the Texas State Organization website. More information about ASTEF is also found on the Texas State Organization website, alphastatetexas.org



One night at the dinner table, my five year old son was working diligently to level out and smooth his macaroni and cheese in the bowl. Looking very pleased with himself, he said, "Look, Mom! I made Iota Pi!" Obviously he had heard me mention my chapter name quite a bit!

Kelly Broadus, Iota Pi, (10-Arlington)

Have an amusing story about the classroom you would like to share? Email it to news.lonestar@gmail.com

International

Rants honored with award



Dr. Carolyn Rants

Dr. Carolyn Rants was awarded the International Achievement Award at the Northwest Regional Conference in Edmonton Alberta, Canada.

The first gold medallion was given to Annie Webb Blanton in 1933. This is the 79th award presented to an outstanding member for distinguished service

Dr. Rants is a visionary who worked to bring the Society into the new millennium. Her many accomplishments include a new Constitution and Standing Rules, professionally designed society materials, updated views on membership and the Create a Buzz campaign.

The awardee has been a member of Delta Kappa Gamma in three different states. She was initiated in Nebraska, transferred to Michigan, and has spent the last 40+ years in Iowa where she served as state president and parliamentarian. She was recipient of the Eunah Temple Holden International Scholarship in 1981 when she was completing work on her doctorate at the University of South Dakota. In 1987 she attended the Leadership Management Seminar at the University of Texas in Austin.

President Souders speaks at SW Regional

Dr. Jensi Souders, international president, addressed the 518 members in attendance at the SW Regional Conference and emphasized the need for strengthening the chapters at the local level.

She stressed that members must embrace change and step up to leadership to secure the organization's future. Leadership doesn't always mean being in the front. It often means taking initiative rather than standing and complaining about what isn't happening.

Innovative thinking is necessary for our chapters' success. Souders affirmed that they are the strength and base of our organization. We must examine how we can spark chapter leadership and help chapters renew their direction. We must get members to see themselves as leaders in organizations, schools and communities.

Members need to be encouraged to lead from the back as well as the front.



Dr. Jensi Souders addressing members at SW Regional in Denver

International

Speakers

Fund

The International Speakers Fund (ISF) Committee is seeking applications for members to participate in this program. An interactive Speaker's Application Form is available on the Website as a download. These applications must be returned by email attachment to International Headquarters at isfapp@dkg.org by September 15.

Established in 1984, ISF facilitates exchange of Society speakers among member countries and helps unite women educators of the world. The ISF Committee selects speakers from among the applicants.